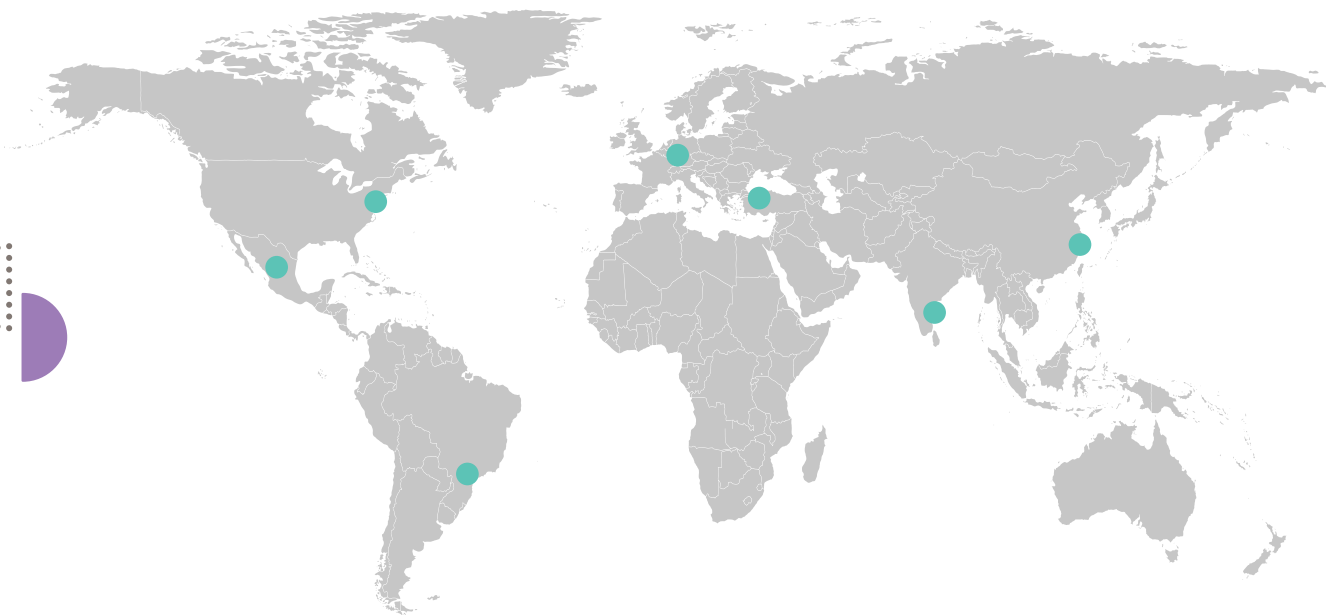


aquarius™ film coating systems technical capabilities

Ashland offers a formidable variety of technical capabilities to meet the needs of the pharmaceutical and nutraceutical industries. Through our global network of technical service laboratories we offer assistance with film coating development, problem solving and analytical support.

Our reach may be global, but our service is local.



locations

North America

Wilmington, Delaware*

Latin America

Mexico City, Mexico
Sao Paulo, Brazil

EMEA

Düsseldorf, Germany*
Istanbul, Turkey

Asia Pacific

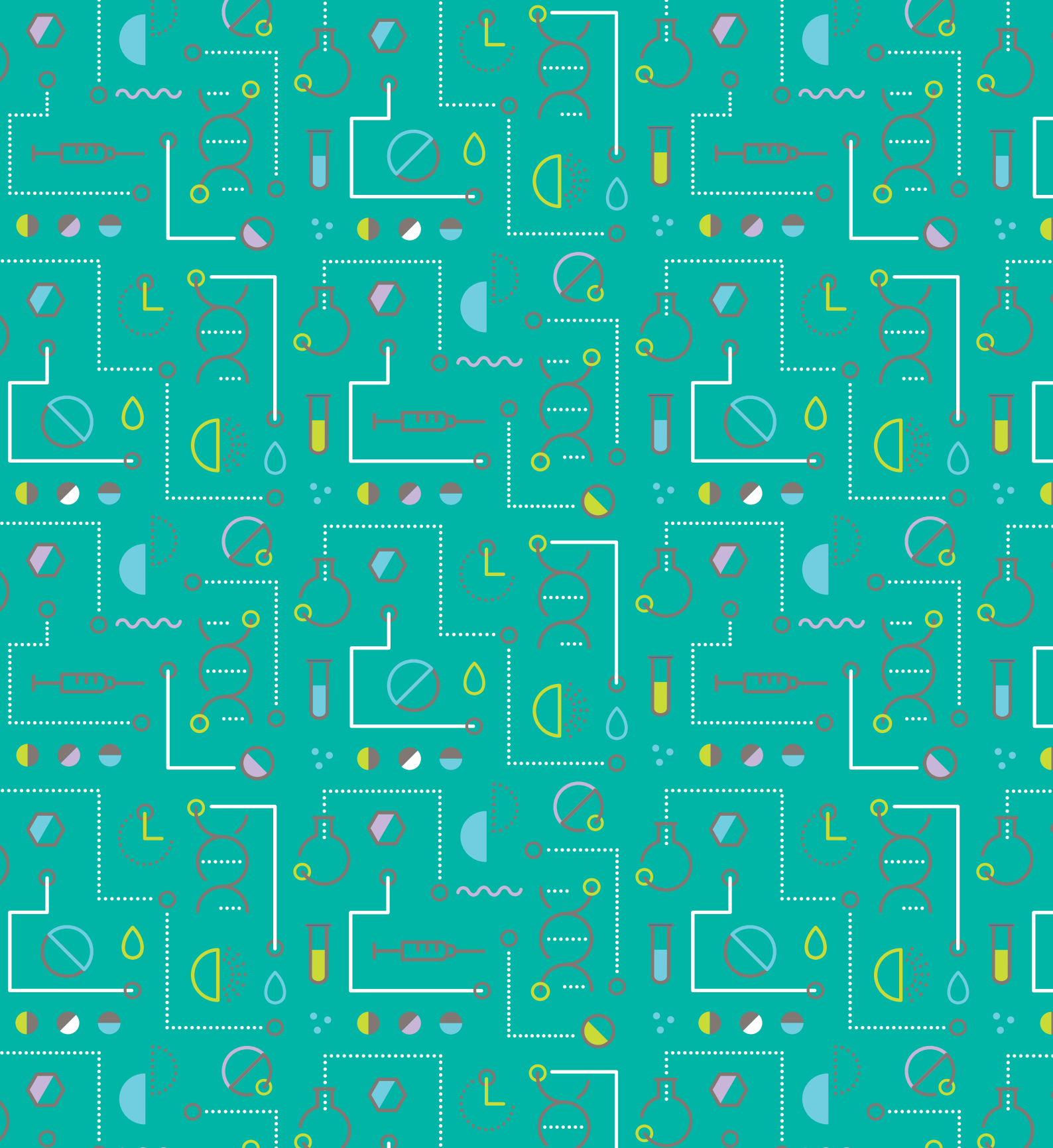
Hyderabad, India*
Shanghai, China*

*center of excellence

Our experts around the world can provide tablet coating and stability studies as well as a range of technical and analytical services in support of your film coating needs.

- lab and pilot scale coating of customer cores
- color matching
- film adhesion testing
- film roughness measurement
- film gloss measurement
- film barrier properties
- troubleshooting, scale-up help and support (technical experts positioned globally)
- other services available upon request

Our staff is very involved in regulatory advocacy activities and trade associations. Among other areas of participation, Ashland was a founding member and has been active with of the International Pharmaceutical Excipients Council (IPEC) Americas for many years and participates on all committees, including IPEC Americas Executive Committee, Compendial Review, Excipient Qualification, Regulatory Affairs and Excipient Composition. We are active participants in IPEC Europe and founding members of IPEC China. In addition, we participate in the ASTM D1.36 Cellulose subcommittee.



regional centers

North America

Wilmington, DE USA
Tel: +1 877 546 2782

Europe

Switzerland
Tel: +41 52 560 55 00

India

Maharashtra
Tel: +91 22 61489696

Asia Pacific

Singapore
Tel: +65 6775 5366

Middle East, Africa

Istanbul, Turkey
Tel: +00 90 216 538 08 00

Latin America

Mexico
Tel: +52 55 52 76 6121

ashland.com/contact

® Registered trademark, Ashland or its subsidiaries, registered in various countries

™ Trademark, Ashland or its subsidiaries, registered in various countries

© 2020, Ashland / PHA20-107

The information contained in this brochure and the various products described are intended for use only by persons having technical skill and at their own discretion and risk after they have performed necessary technical investigations, tests and evaluations of the products and their uses. Certain end uses of these products may be regulated pursuant to rules or regulations governing medical devices, drug uses, or pesticidal or antimicrobial uses. It is the end user's responsibility to determine the applicability of such regulations to its products.

All statements, information, and data presented herein are believed to be accurate and reliable, but are not to be taken as a guarantee of fitness for a particular purpose, or representation, express or implied, for which seller assumes legal responsibility. No freedom to use any patent owned by Ashland, its subsidiaries, or its suppliers is to be inferred.

