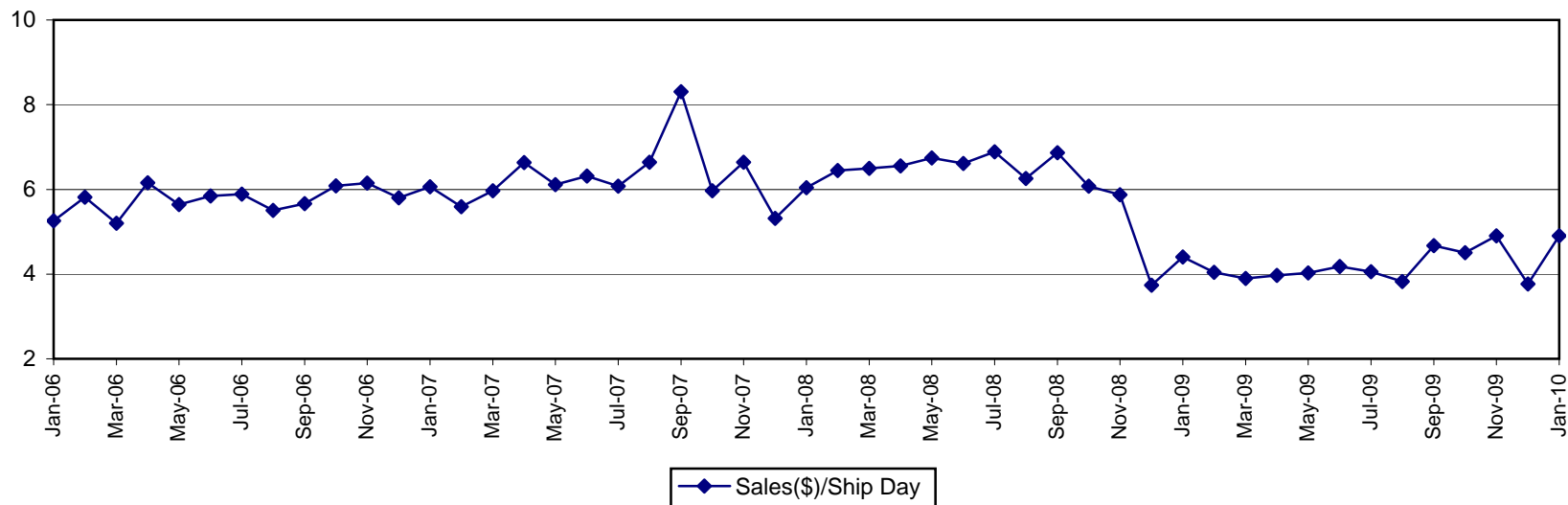




Ashland Performance Materials Average Sales(\$)/ Shipping Day

(\$ in millions)



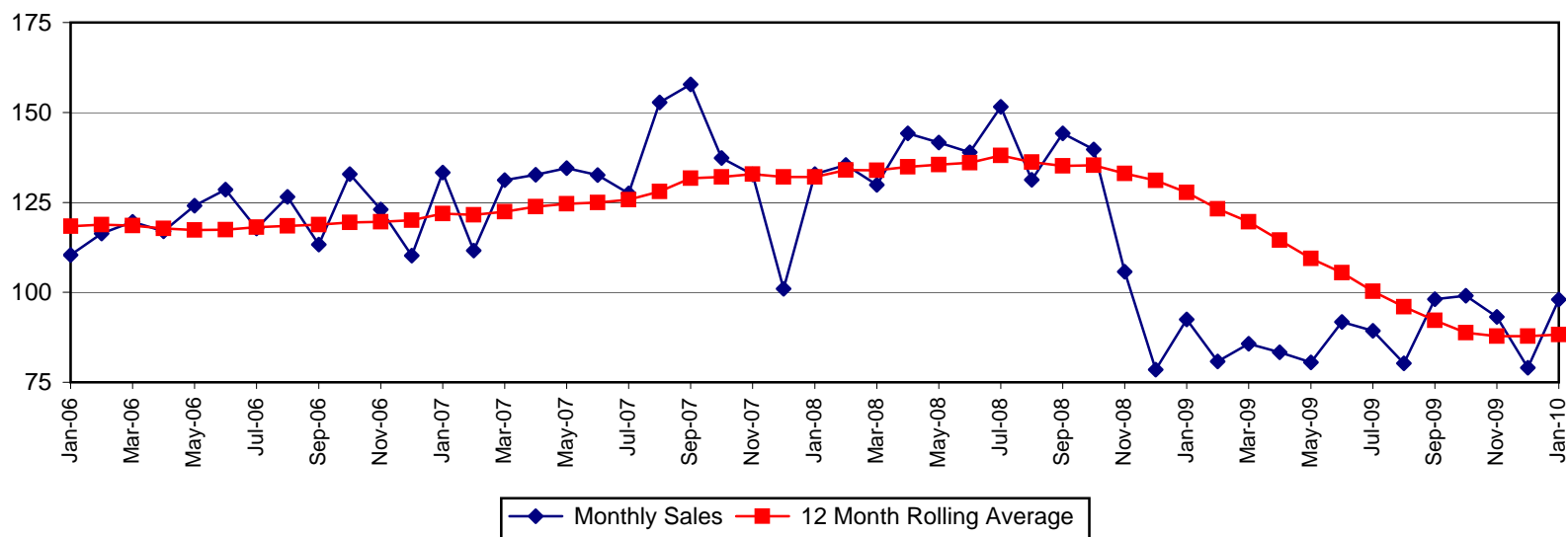
Average Sales per Shipping Day (\$ in millions)*

	2006	2007	2008	2009	2010
Jan	5.258	6.061	6.040	4.403	4.901
Feb	5.816	5.593	6.446	4.042	
Mar	5.200	5.965	6.494	3.896	
Apr	6.156	6.637	6.552	3.966	
May	5.641	6.112	6.741	4.024	
Jun	5.845	6.313	6.612	4.176	
Jul	5.886	6.073	6.889	4.058	
Aug	5.501	6.642	6.254	3.822	
Sep	5.663	8.307	6.867	4.673	
Oct	6.083	5.968	6.074	4.505	
Nov	6.149	6.642	5.872	4.902	
Dec	5.800	5.318	3.738	3.764	

*NOTE: August and September 2007 information (and 3 and 12 month rolling averages that contain August and September 2007 information) is affected by the 13 month foreign reporting impact described on the Business Fundamentals page of this website.

Ashland Performance Materials Sales

(\$ in millions)



Monthly Sales (\$ in millions)*

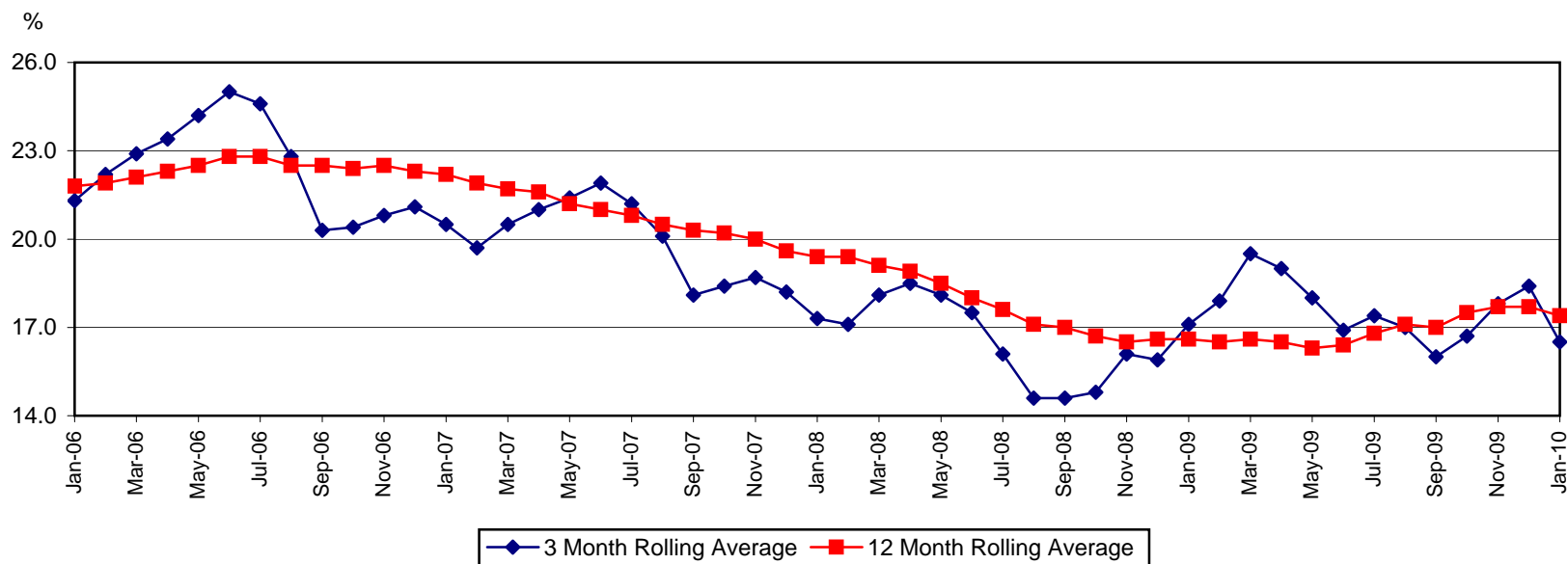
	2006	2007	2008	2009	2010
Jan	110.4	133.3	132.9	92.5	98.0
Feb	116.3	111.6	135.4	80.8	
Mar	119.6	131.2	129.9	85.7	
Apr	117.0	132.7	144.2	83.3	
May	124.1	134.5	141.6	80.5	
Jun	128.6	132.6	138.9	91.8	
Jul	117.7	127.5	151.6	89.3	
Aug	126.5	152.8	131.3	80.3	
Sep	113.3	157.8	144.2	98.1	
Oct	132.8	137.3	139.7	99.1	
Nov	123.0	132.8	105.7	93.2	
Dec	110.2	101.0	78.5	79.0	

12 Month Rolling Average (\$ in millions)*

	2006	2007	2008	2009	2010
Jan	118.4	121.9	132.1	127.8	88.3
Feb	118.8	121.5	134.0	123.2	
Mar	118.5	122.4	133.9	119.6	
Apr	117.8	123.8	134.9	114.5	
May	117.3	124.6	135.5	109.4	
Jun	117.4	125.0	136.0	105.5	
Jul	118.1	125.8	138.0	100.3	
Aug	118.5	128.0	136.2	96.0	
Sep	118.8	131.7	135.1	92.2	
Oct	119.4	132.1	135.3	88.8	
Nov	119.6	132.9	133.0	87.8	
Dec	120.0	132.1	131.1	87.8	

*NOTE: August and September 2007 information (and 3 and 12 month rolling averages that contain August and September 2007 information) is affected by the 13 month foreign reporting impact described on the Business Fundamentals page of this website.

Ashland Performance Materials Gross Profit %



3 Month Rolling Average (%)*

	2006	2007	2008	2009	2010
Jan	21.3	20.5	17.3	17.1	16.5
Feb	22.2	19.7	17.1	17.9	
Mar	22.9	20.5	18.1	19.5	
Apr	23.4	21.0	18.5	19.0	
May	24.2	21.4	18.1	18.0	
Jun	25.0	21.9	17.5	16.9	
Jul	24.6	21.2	16.1	17.4	
Aug	22.8	20.1	14.6	17.0	
Sep	20.3	18.1	14.6	16.0	
Oct	20.4	18.4	14.8	16.7	
Nov	20.8	18.7	16.1	17.8	
Dec	21.1	18.2	15.9	18.4	

12 Month Rolling Average (%)*

	2006	2007	2008	2009	2010
Jan	21.8	22.2	19.4	16.6	17.4
Feb	21.9	21.9	19.4	16.5	
Mar	22.1	21.7	19.1	16.6	
Apr	22.3	21.6	18.9	16.5	
May	22.5	21.2	18.5	16.3	
Jun	22.8	21.0	18.0	16.4	
Jul	22.8	20.8	17.6	16.8	
Aug	22.5	20.5	17.1	17.1	
Sep	22.5	20.3	17.0	17.0	
Oct	22.4	20.2	16.7	17.5	
Nov	22.5	20.0	16.5	17.7	
Dec	22.3	19.6	16.6	17.7	

*NOTE: August and September 2007 information (and 3 and 12 month rolling averages that contain August and September 2007 information) is affected by the 13 month foreign reporting impact described on the Business Fundamentals page of this website.