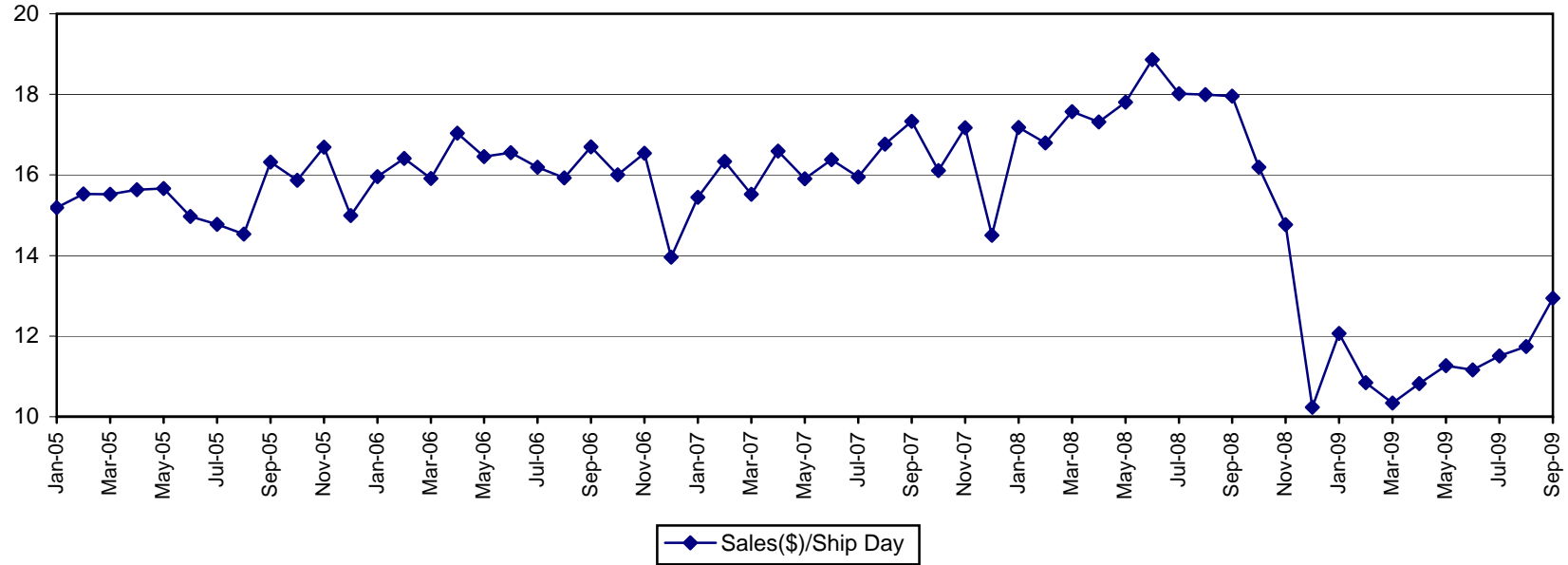




Ashland Distribution Average Sales(\$)/ Shipping Day

(\$ in millions)



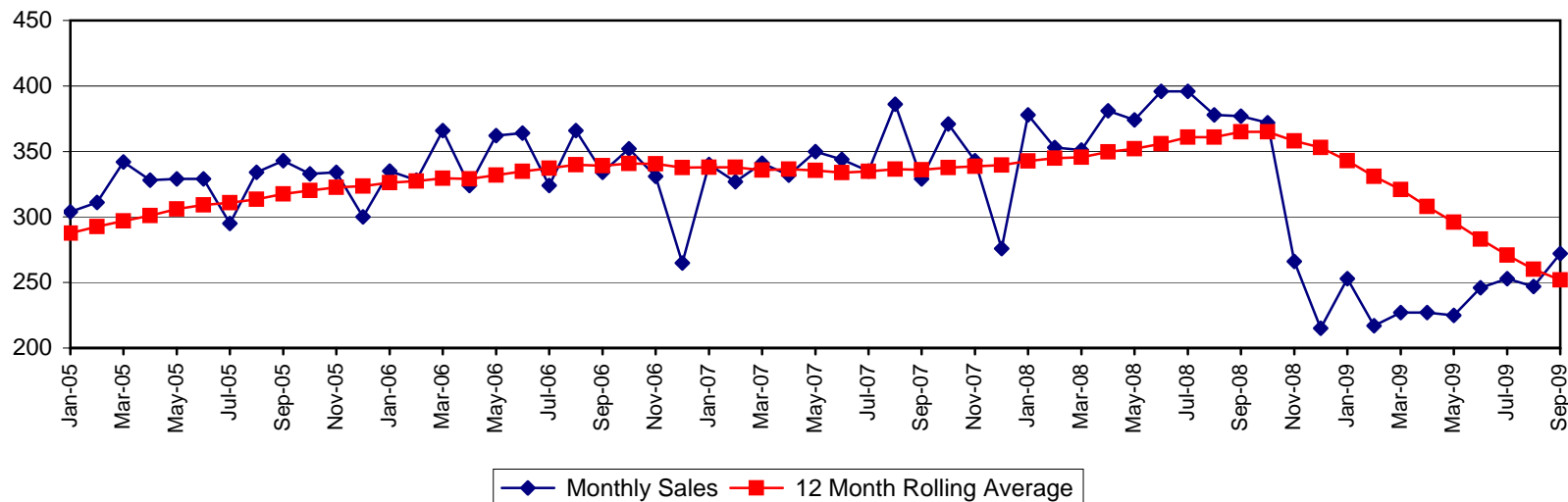
Average Sales per Shipping Day (\$ in millions)*

	2005	2006	2007	2008	2009
Jan	15.187	15.959	15.445	17.177	12.065
Feb	15.530	16.412	16.333	16.794	10.847
Mar	15.524	15.910	15.520	17.574	10.339
Apr	15.631	17.034	16.592	17.319	10.825
May	15.664	16.459	15.905	17.809	11.268
Jun	14.971	16.552	16.377	18.863	11.160
Jul	14.774	16.194	15.948	18.018	11.506
Aug	14.535	15.925	16.762	17.994	11.744
Sep	16.319	16.695	17.328	17.958	12.938
Oct	15.870	16.000	16.109	16.188	
Nov	16.688	16.537	17.169	14.765	
Dec	14.991	13.963	14.506	10.232	

*NOTE: August and September 2007 information (and 3 and 12 month rolling averages that contain August and September 2007 information) is affected by the 13 month foreign reporting impact described on the Business Fundamentals page of this website.

Ashland Distribution Revenue

(\$ in millions)



Monthly Sales (\$ in millions)*

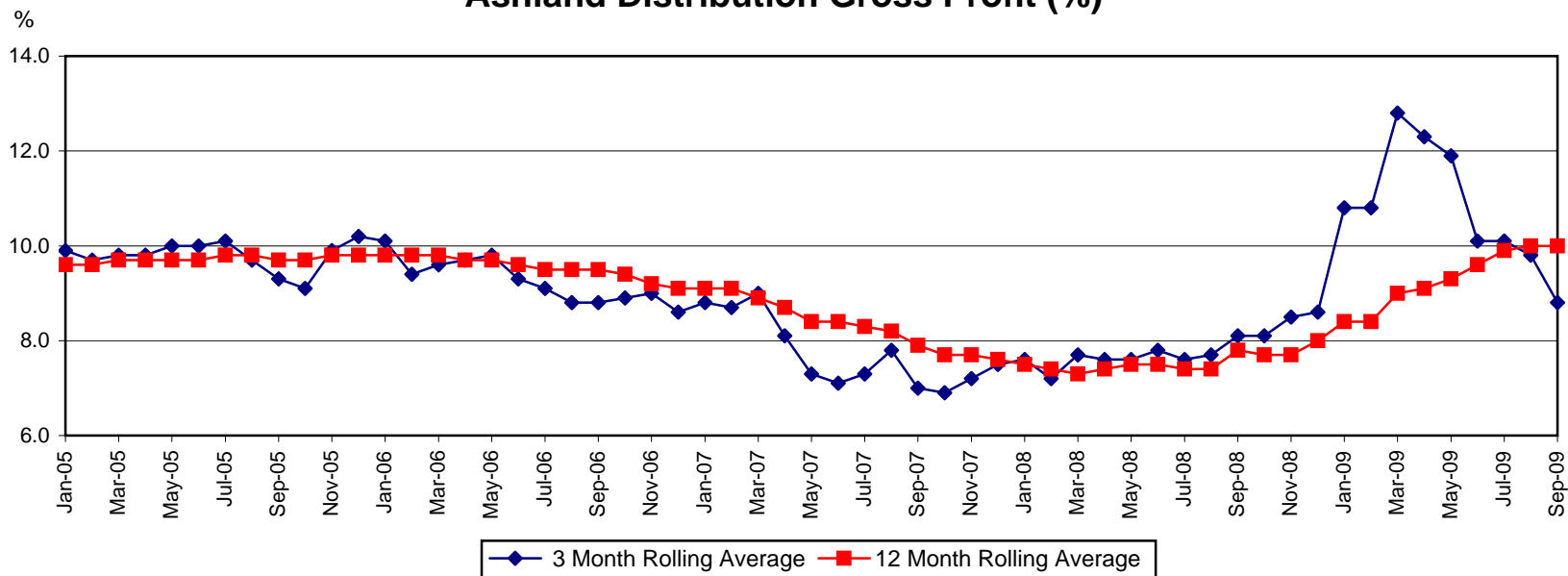
	2005	2006	2007	2008	2009
Jan	304	335	340	378	253
Feb	311	328	327	353	217
Mar	342	366	341	351	227
Apr	328	324	332	381	227
May	329	362	350	374	225
Jun	329	364	344	396	246
Jul	295	324	335	396	253
Aug	334	366	386	378	247
Sep	343	334	329	377	271
Oct	333	352	371	372	
Nov	334	331	343	266	
Dec	300	265	276	215	

12 Month Rolling Average (\$ in millions)*

	2005	2006	2007	2008	2009
Jan	288	326	338	343	343
Feb	293	328	338	345	331
Mar	297	330	336	346	321
Apr	301	329	337	350	308
May	306	332	336	352	296
Jun	309	335	334	356	283
Jul	311	337	335	361	271
Aug	314	340	336	361	260
Sep	318	339	336	365	252
Oct	320	341	338	365	
Nov	323	341	339	358	
Dec	324	338	340	353	

*NOTE: August and September 2007 information (and 3 and 12 month rolling averages that contain August and September 2007 information) is affected by the 13 month foreign reporting impact described on the Business Fundamentals page of this website.

Ashland Distribution Gross Profit (%)



3 Month Rolling Average (%)*

	2005	2006	2007	2008	2009
Jan	9.9	10.1	8.8	7.6	10.8
Feb	9.7	9.4	8.7	7.2	10.8
Mar	9.8	9.6	9.0	7.7	12.8
Apr	9.8	9.7	8.1	7.6	12.3
May	10.0	9.8	7.3	7.6	11.9
Jun	10.0	9.3	7.1	7.8	10.1
Jul	10.1	9.1	7.3	7.6	10.1
Aug	9.7	8.8	7.8	7.7	9.8
Sep	9.3	8.8	7.0	8.1	8.8
Oct	9.1	8.9	6.9	8.1	
Nov	9.9	9.0	7.2	8.5	
Dec	10.2	8.6	7.5	8.6	

12 Month Rolling Average (%)*

	2005	2006	2007	2008	2009
Jan	9.6	9.8	9.1	7.5	8.4
Feb	9.6	9.8	9.1	7.4	8.4
Mar	9.7	9.8	8.9	7.3	9.0
Apr	9.7	9.7	8.7	7.4	9.1
May	9.7	9.7	8.4	7.5	9.3
Jun	9.7	9.6	8.4	7.5	9.6
Jul	9.8	9.5	8.3	7.4	9.9
Aug	9.8	9.5	8.2	7.4	10.0
Sep	9.7	9.5	7.9	7.8	10.0
Oct	9.7	9.4	7.7	7.7	
Nov	9.8	9.2	7.7	7.7	
Dec	9.8	9.1	7.6	8.0	

*NOTE: August and September 2007 information (and 3 and 12 month rolling averages that contain August and September 2007 information) is affected by the 13 month foreign reporting impact described on the Business Fundamentals page of this website. Distribution's gross profit as a percentage of sales for the three months ended March 31, 2009 and 2008 include a LIFO quantity credit of \$11 million and \$4 million, respectively.