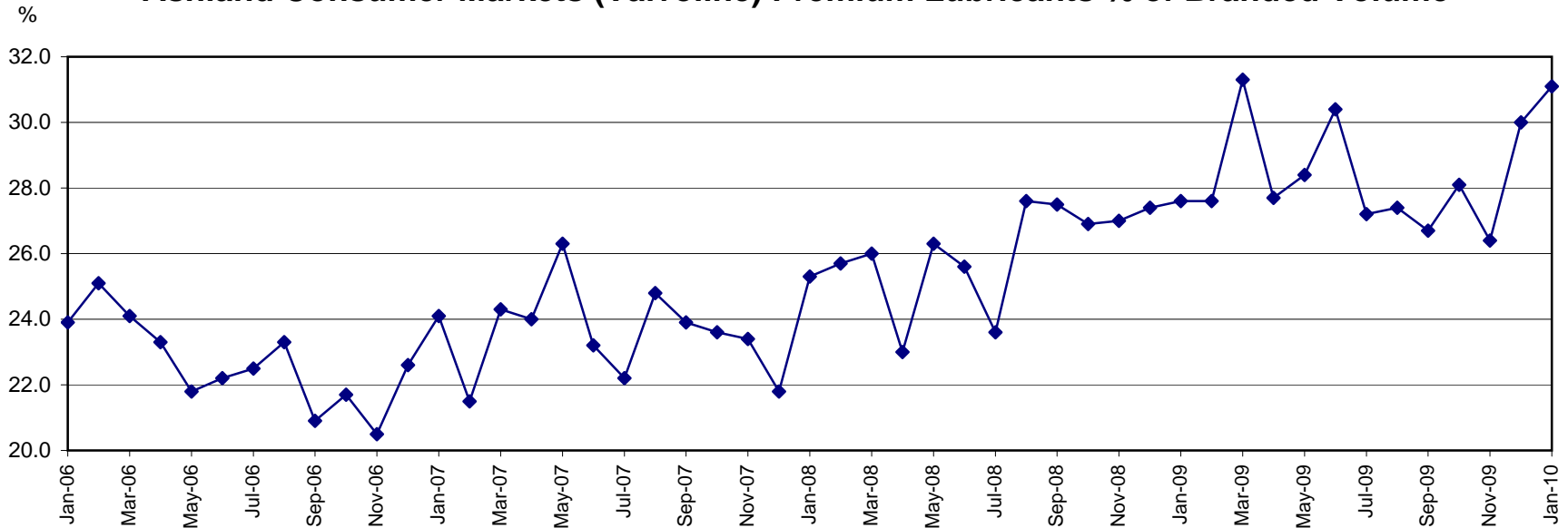




### Ashland Consumer Markets (Valvoline) Premium Lubricants % of Branded Volume



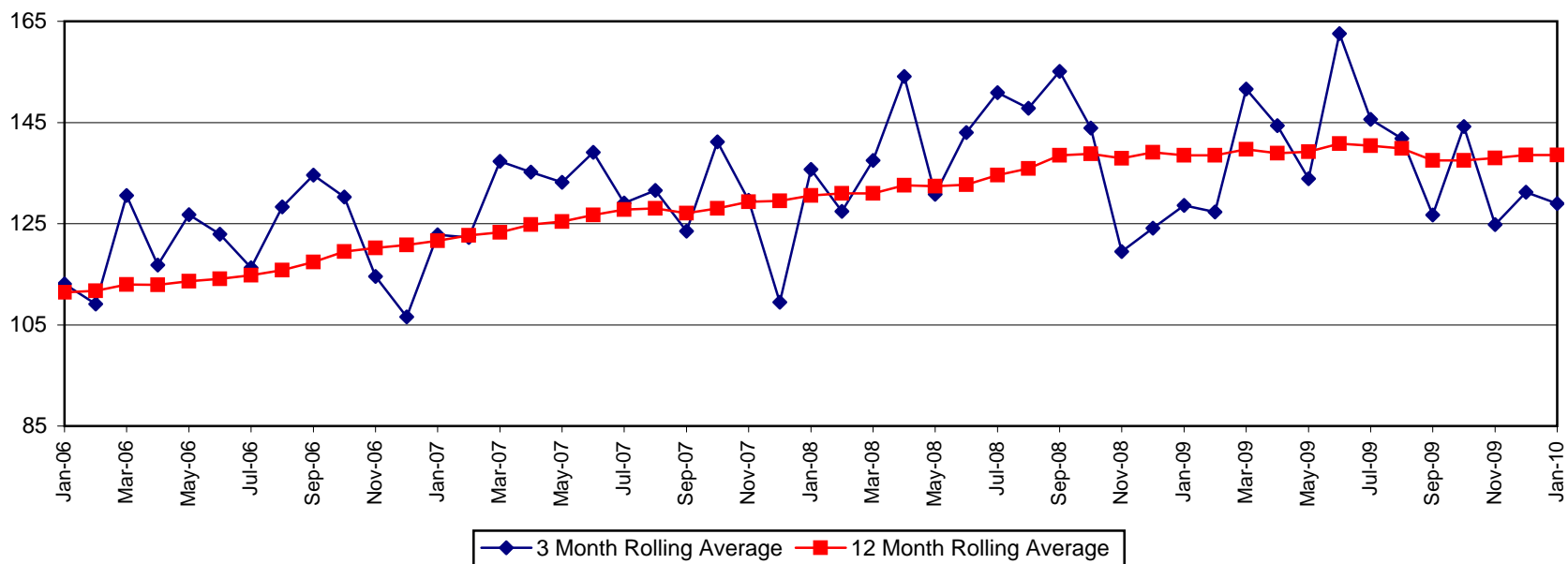
**Premium Lubricants % of Branded Volume**

	<b>2006</b>	<b>2007</b>	<b>2008</b>	<b>2009</b>	<b>2010</b>
<b>Jan</b>	23.9	24.1	25.3	27.6	31.1
<b>Feb</b>	25.1	21.5	25.7	27.6	
<b>Mar</b>	24.1	24.3	26.0	31.3	
<b>Apr</b>	23.3	24.0	23.0	27.7	
<b>May</b>	21.8	26.3	26.3	28.4	
<b>Jun</b>	22.2	23.2	25.6	30.4	
<b>Jul</b>	22.5	22.2	23.6	27.2	
<b>Aug</b>	23.3	24.8	27.6	27.4	
<b>Sep</b>	20.9	23.9	27.5	26.7	
<b>Oct</b>	21.7	23.6	26.9	28.1	
<b>Nov</b>	20.5	23.4	27.0	26.4	
<b>Dec</b>	22.6	21.8	27.4	30.0	



## Ashland Consumer Markets (Valvoline) Sales

(\$ in millions)



Monthly Sales (\$ in millions)\*

	2006	2007	2008	2009	2010
Jan	113.1	122.8	135.7	128.6	129.0
Feb	109.1	122.3	127.4	127.3	
Mar	130.6	137.3	137.5	151.6	
Apr	116.8	135.2	154.1	144.4	
May	126.8	133.2	130.8	133.9	
Jun	122.9	139.1	143.0	162.6	
Jul	116.3	129.1	150.9	145.6	
Aug	128.3	131.6	147.8	141.8	
Sep	134.6	123.5	155.1	126.7	
Oct	130.3	141.2	143.9	144.2	
Nov	114.6	129.6	119.5	124.8	
Dec	106.6	109.5	124.1	131.2	

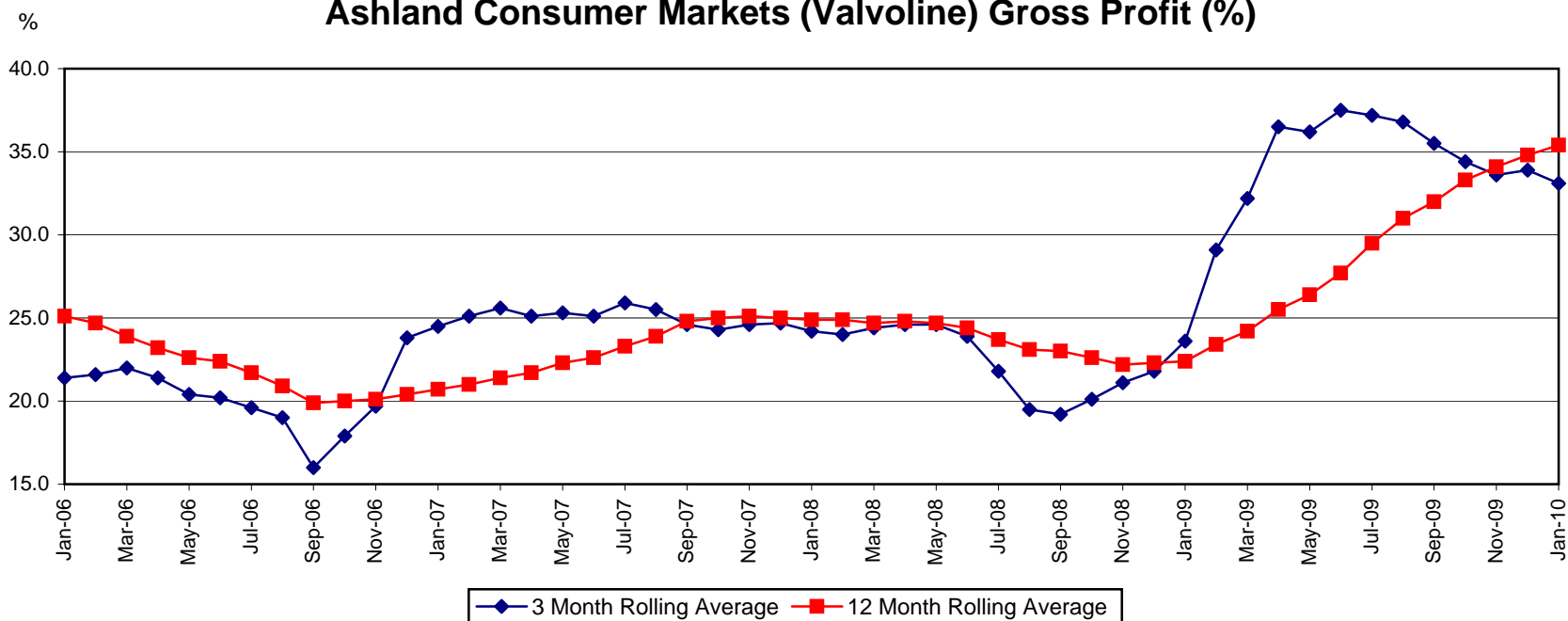
12 Month Rolling Average (\$ in millions)\*

	2006	2007	2008	2009	2010
Jan	111.4	121.6	130.6	138.5	138.6
Feb	111.7	122.7	131.0	138.5	
Mar	113.0	123.3	131.0	139.7	
Apr	112.9	124.8	132.6	138.9	
May	113.6	125.4	132.4	139.2	
Jun	114.1	126.7	132.7	140.8	
Jul	114.8	127.8	134.6	140.4	
Aug	115.8	128.0	135.9	139.9	
Sep	117.4	127.1	138.5	137.5	
Oct	119.5	128.0	138.8	137.5	
Nov	120.2	129.3	137.9	138.0	
Dec	120.8	129.5	139.1	138.6	

\*NOTE: August and September 2007 information (and 3 and 12 month rolling averages that contain August and September 2007 information) is affected by the 13 month foreign reporting impact described on the Business Fundamentals page of this website.



### Ashland Consumer Markets (Valvoline) Gross Profit (%)



**3 Month Rolling Average (%)\***

	2006	2007	2008	2009	2010
Jan	21.4	24.5	24.2	23.6	33.1
Feb	21.6	25.1	24.0	29.1	
Mar	22.0	25.6	24.4	32.2	
Apr	21.4	25.1	24.6	36.5	
May	20.4	25.3	24.6	36.2	
Jun	20.2	25.1	23.9	37.5	
Jul	19.6	25.9	21.8	37.2	
Aug	19.0	25.5	19.5	36.8	
Sep	16.0	24.6	19.2	35.5	
Oct	17.9	24.3	20.1	34.4	
Nov	19.7	24.6	21.1	33.6	
Dec	23.8	24.7	21.8	33.9	

**12 Month Rolling Average (%)\***

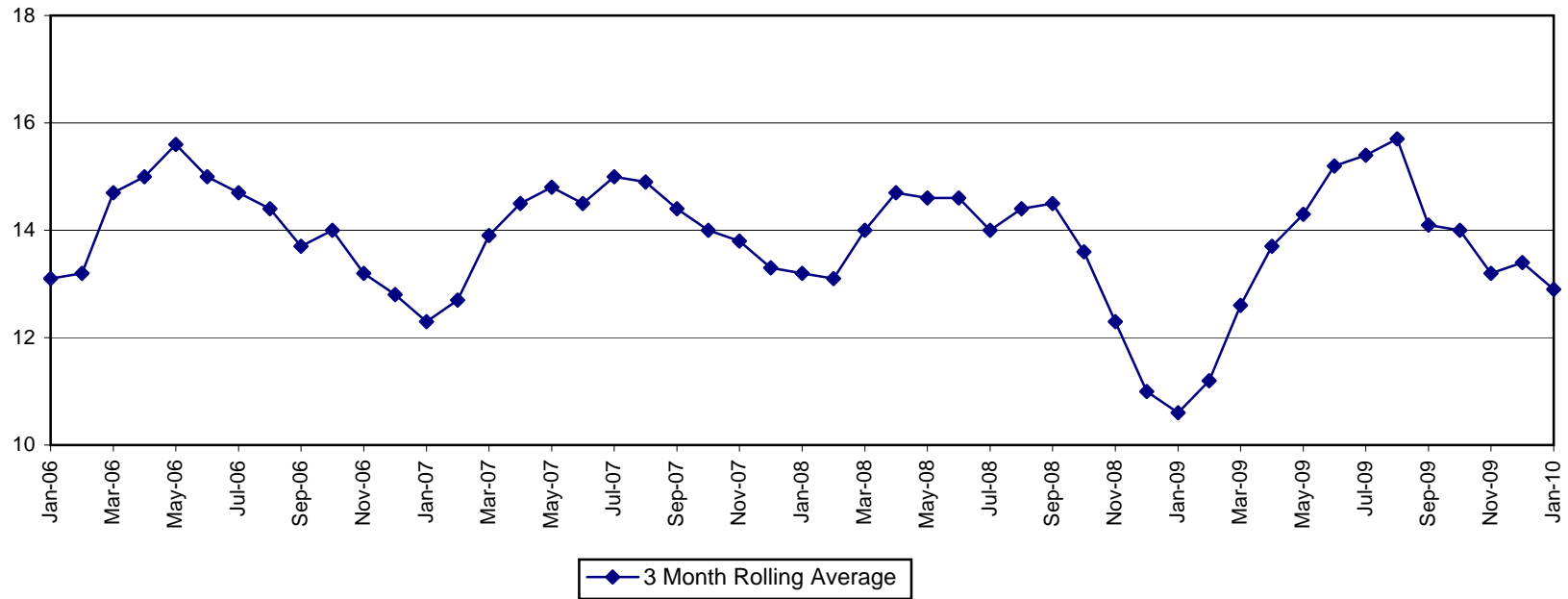
	2006	2007	2008	2009	2010
Jan	25.1	20.7	24.9	22.4	35.4
Feb	24.7	21.0	24.9	23.4	
Mar	23.9	21.4	24.7	24.2	
Apr	23.2	21.7	24.8	25.5	
May	22.6	22.3	24.7	26.4	
Jun	22.4	22.6	24.4	27.7	
Jul	21.7	23.3	23.7	29.5	
Aug	20.9	23.9	23.1	31.0	
Sep	19.9	24.8	23.0	32.0	
Oct	20.0	25.0	22.6	33.3	
Nov	20.1	25.1	22.2	34.1	
Dec	20.4	25.0	22.3	34.8	

\*NOTE: August and September 2007 information (and 3 and 12 month rolling averages that contain August and September 2007 information) is affected by the 13 month foreign reporting impact described on the Business Fundamentals page of this website.



## Ashland Consumer Markets (Valvoline) Lubricant Sales Gallons

Gallons (in millions)



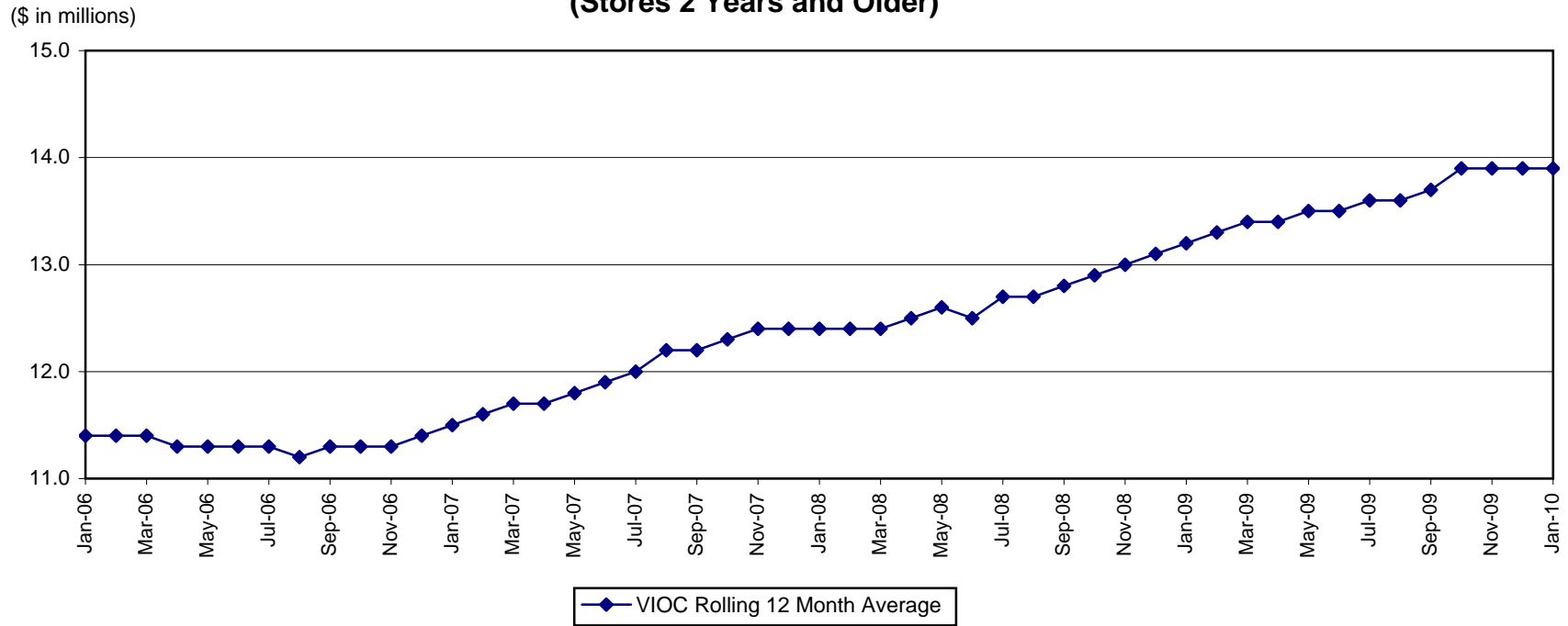
3 Month Rolling Average (in millions)\*

	2006	2007	2008	2009	2010
Jan	13.1	12.3	13.2	10.6	12.9
Feb	13.2	12.7	13.1	11.2	
Mar	14.7	13.9	14.0	12.6	
Apr	15.0	14.5	14.7	13.7	
May	15.6	14.8	14.6	14.3	
Jun	15.0	14.5	14.6	15.2	
Jul	14.7	15.0	14.0	15.4	
Aug	14.4	14.9	14.4	15.7	
Sep	13.7	14.4	14.5	14.1	
Oct	14.0	14.0	13.6	14.0	
Nov	13.2	13.8	12.3	13.2	
Dec	12.8	13.3	11.0	13.4	

\*NOTE: August and September 2007 information (and 3 and 12 month rolling averages that contain August and September 2007 information) is affected by the 13 month foreign reporting impact described on the Business Fundamentals page of this website.



## VIOC 12 Month Rolling Average Sales (Stores 2 Years and Older)



**Stores 2 Years and Older (\$ in millions)\***

	2006	2007	2008	2009	2010
Jan	11.4	11.5	12.4	13.2	13.9
Feb	11.4	11.6	12.4	13.3	
Mar	11.4	11.7	12.4	13.4	
Apr	11.3	11.7	12.5	13.4	
May	11.3	11.8	12.6	13.5	
Jun	11.3	11.9	12.5	13.5	
Jul	11.3	12.0	12.7	13.6	
Aug	11.2	12.2	12.7	13.6	
Sep	11.3	12.2	12.8	13.7	
Oct	11.3	12.3	12.9	13.9	
Nov	11.3	12.4	13.0	13.9	
Dec	11.4	12.4	13.1	13.9	

\*NOTE: 60 VIOC stores transferred to Marathon on June 30, 2005, have been excluded from this data.