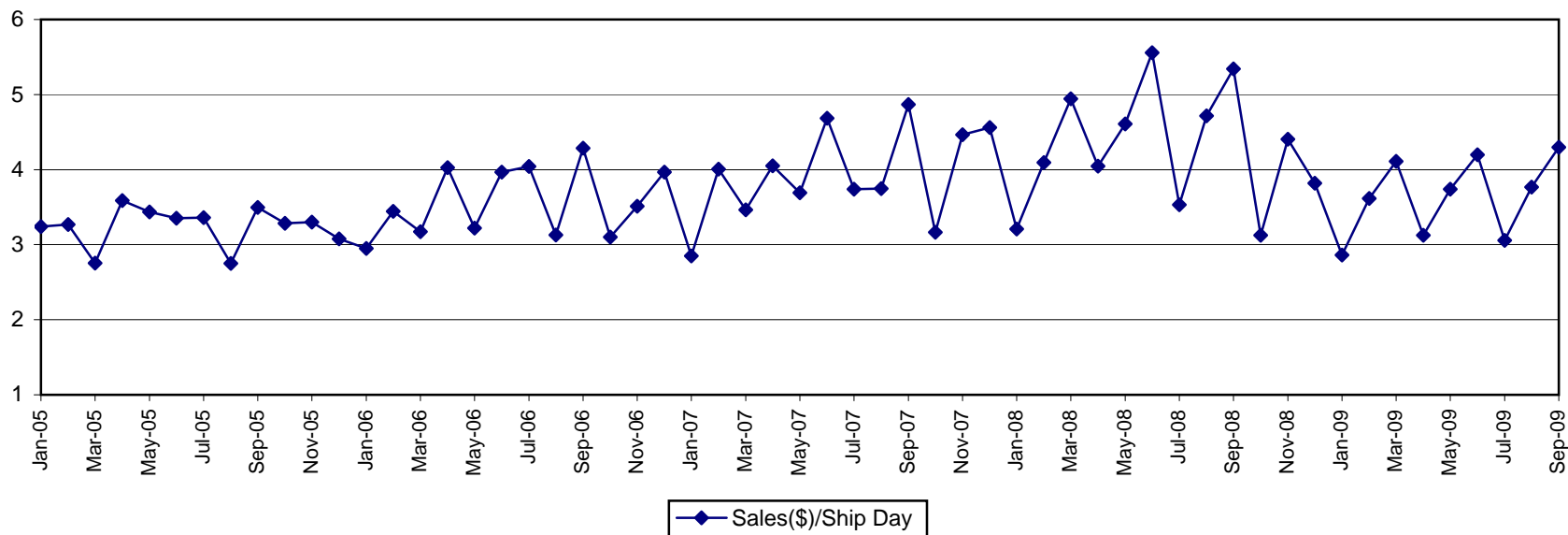


Ashland Aqualon Functional Ingredients Average Sales(\$)/ Shipping Day

(\$ in millions)

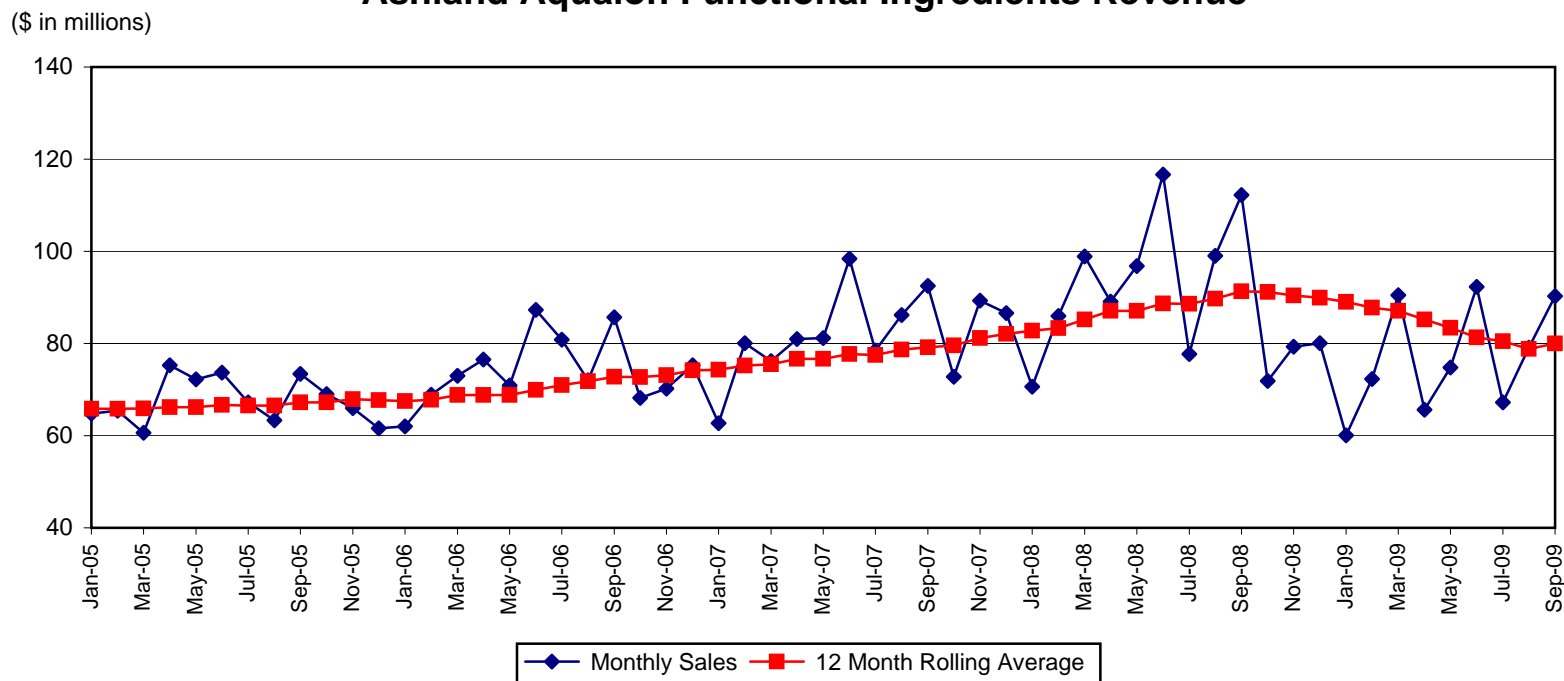


Average Sales per Shipping Day (\$ in millions)*

	2005	2006	2007	2008	2009
Jan	3.240	2.951	2.851	3.208	2.864
Feb	3.268	3.445	4.005	4.093	3.616
Mar	2.755	3.172	3.465	4.945	4.112
Apr	3.586	4.025	4.050	4.048	3.125
May	3.438	3.222	3.690	4.610	3.740
Jun	3.352	3.967	4.686	5.558	4.197
Jul	3.362	4.042	3.739	3.531	3.056
Aug	2.751	3.129	3.748	4.715	3.768
Sep	3.497	4.286	4.868	5.343	4.299
Oct	3.286	3.101	3.164	3.125	
Nov	3.299	3.510	4.466	4.404	
Dec	3.079	3.966	4.560	3.817	

*NOTE: Information from October 2008 and prior represent the pre-acquisition operations of Hercules' Aqualon Group acquired on November 13, 2008.

Ashland Aqualon Functional Ingredients Revenue



Monthly Sales (\$ in millions)*

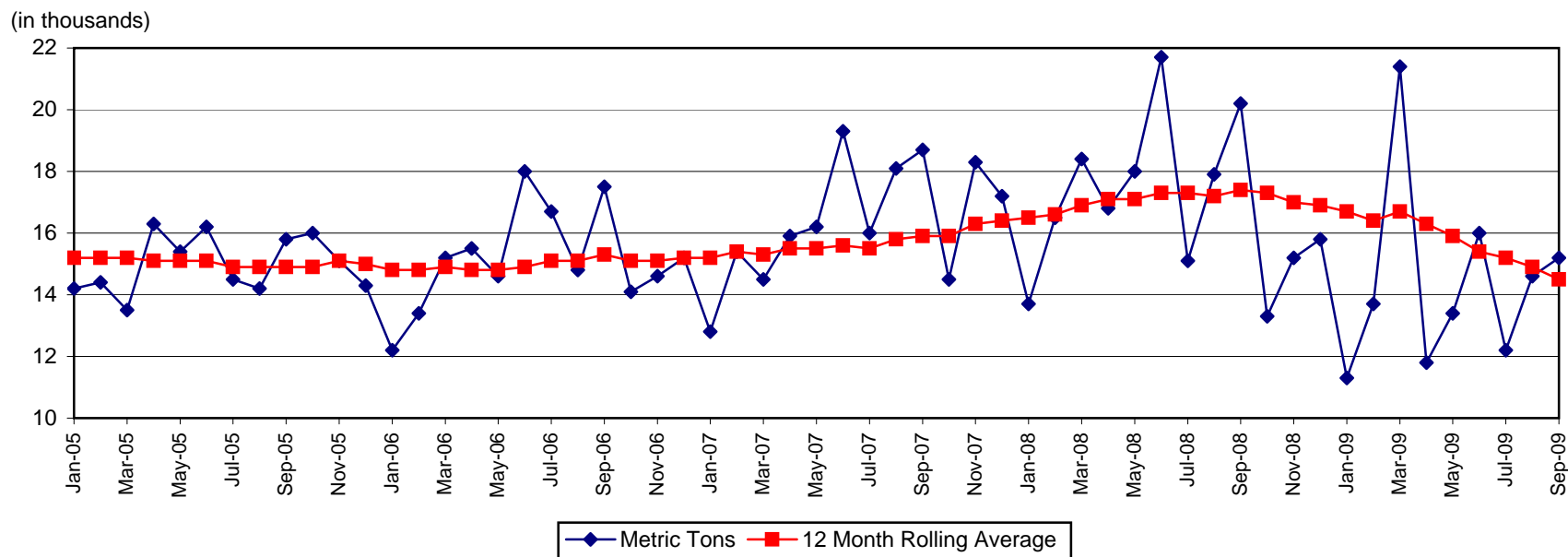
	2005	2006	2007	2008	2009
Jan	64.8	62.0	62.7	70.6	60.1
Feb	65.4	68.9	80.1	86.0	72.3
Mar	60.6	73.0	76.2	98.9	90.5
Apr	75.3	76.5	81.0	89.1	65.6
May	72.2	70.9	81.2	96.8	74.8
Jun	73.7	87.3	98.4	116.7	92.3
Jul	67.2	80.8	78.5	77.7	67.2
Aug	63.3	72.0	86.2	99.0	79.1
Sep	73.4	85.7	92.5	112.2	90.3
Oct	69.0	68.2	72.8	71.9	
Nov	66.0	70.2	89.3	79.3	
Dec	61.6	75.3	86.6	80.1	

12 Month Rolling Average (\$ in millions)*

	2005	2006	2007	2008	2009
Jan	65.8	67.5	74.3	82.8	89.0
Feb	65.8	67.8	75.2	83.3	87.8
Mar	65.9	68.8	75.5	85.2	87.1
Apr	66.2	68.8	76.7	87.1	85.2
May	66.2	68.8	76.7	87.1	83.4
Jun	66.7	69.9	77.7	88.7	81.3
Jul	66.5	71.0	77.5	88.6	80.5
Aug	66.5	71.8	78.7	89.7	78.8
Sep	67.2	72.8	79.2	91.3	77.0
Oct	67.2	72.7	79.6	91.2	
Nov	67.9	73.1	81.2	90.4	
Dec	67.7	74.2	82.1	89.9	

*NOTE: Information from October 2008 and prior represent the pre-acquisition operations of Hercules' Aqualon Group acquired on November 13, 2008. The 12 month rolling sales average will continue to include pre-acquisition results through November 2009.

Ashland Aqualon Functional Ingredients Volume in Metric Tons



Metric Tons (in thousands)*

	2005	2006	2007	2008	2009
Jan	14.2	12.2	12.8	13.7	11.3
Feb	14.4	13.4	15.4	16.5	13.7
Mar	13.5	15.2	14.5	18.4	21.4
Apr	16.3	15.5	15.9	16.8	11.8
May	15.4	14.6	16.2	18.0	13.4
Jun	16.2	18.0	19.3	21.7	16.0
Jul	14.5	16.7	16.0	15.1	12.2
Aug	14.2	14.8	18.1	17.9	14.6
Sep	15.8	17.5	18.7	20.2	15.2
Oct	16.0	14.1	14.5	13.3	
Nov	15.1	14.6	18.3	15.2	
Dec	14.3	15.2	17.2	15.8	

12 Month Rolling Average (in thousands)*

	2005	2006	2007	2008	2009
Jan	15.2	14.8	15.2	16.5	16.7
Feb	15.2	14.8	15.4	16.6	16.4
Mar	15.2	14.9	15.3	16.9	16.7
Apr	15.1	14.8	15.5	17.1	16.3
May	15.1	14.8	15.5	17.1	15.9
Jun	15.1	14.9	15.6	17.3	15.4
Jul	14.9	15.1	15.5	17.3	15.2
Aug	14.9	15.1	15.8	17.2	14.9
Sep	14.9	15.3	15.9	17.4	14.5
Oct	14.9	15.1	15.9	17.3	
Nov	15.1	15.1	16.3	17.0	
Dec	15.0	15.2	16.4	16.9	

*NOTE: Information from October 2008 and prior represent the pre-acquisition operations of Hercules' Aqualon Group acquired on November 13, 2008. The 12 month rolling average will continue to include pre-acquisition results through November 2009.